

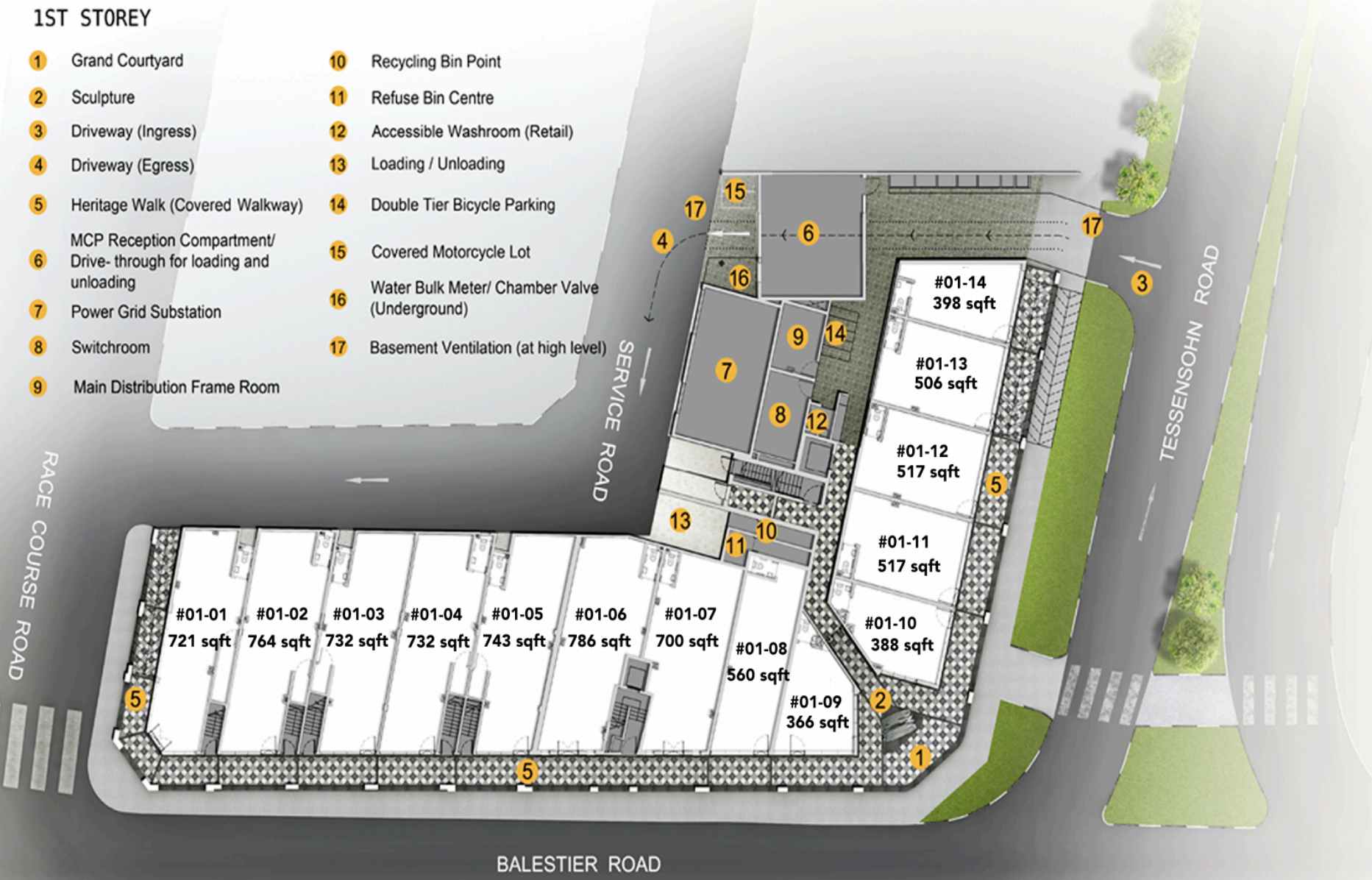
1953

1953 FLOOR PLANS

1st Storey Site Plan

1ST STOREY

- | | |
|---|---|
| 1 Grand Courtyard | 10 Recycling Bin Point |
| 2 Sculpture | 11 Refuse Bin Centre |
| 3 Driveway (Ingress) | 12 Accessible Washroom (Retail) |
| 4 Driveway (Egress) | 13 Loading / Unloading |
| 5 Heritage Walk (Covered Walkway) | 14 Double Tier Bicycle Parking |
| MCP Reception Compartment/
Drive- through for loading and
unloading | 15 Covered Motorcycle Lot |
| 6 | 16 Water Bulk Meter/ Chamber Valve
(Underground) |
| 7 Power Grid Substation | 17 Basement Ventilation (at high level) |
| 8 Switchroom | |
| 9 Main Distribution Frame Room | |



Facilities Plan

4TH STOREY PLAN

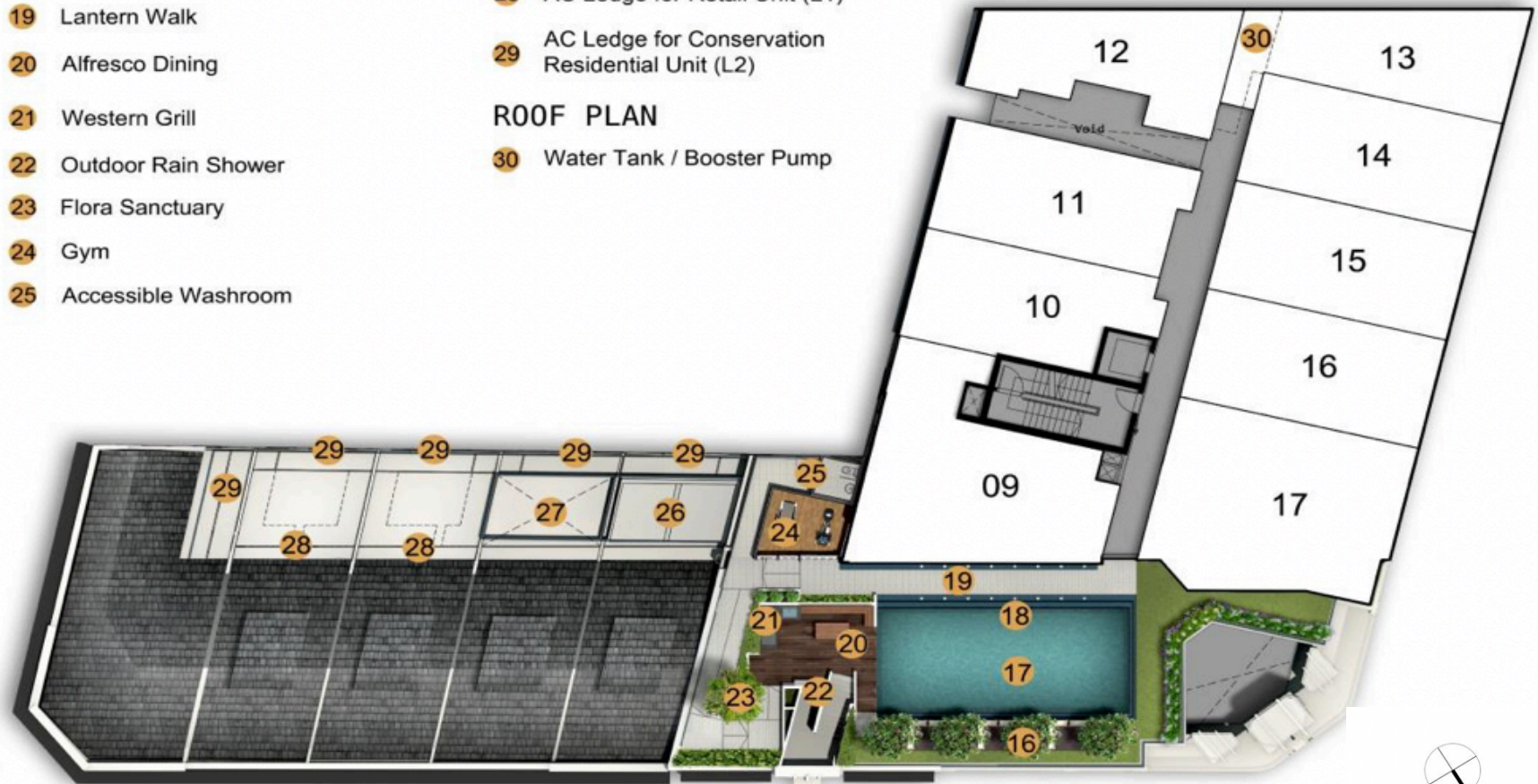
- 16 Poolside Lounge
- 17 Pool
- 18 Cascading Water Feature
- 19 Lantern Walk
- 20 Alfresco Dining
- 21 Western Grill
- 22 Outdoor Rain Shower
- 23 Flora Sanctuary
- 24 Gym
- 25 Accessible Washroom

3RD STOREY PLAN

- 26 Pool Balancing Tank / Filtration Pump Room
- 27 Genset
- 28 AC Ledge for Retail Unit (L1)
- 29 AC Ledge for Conservation Residential Unit (L2)

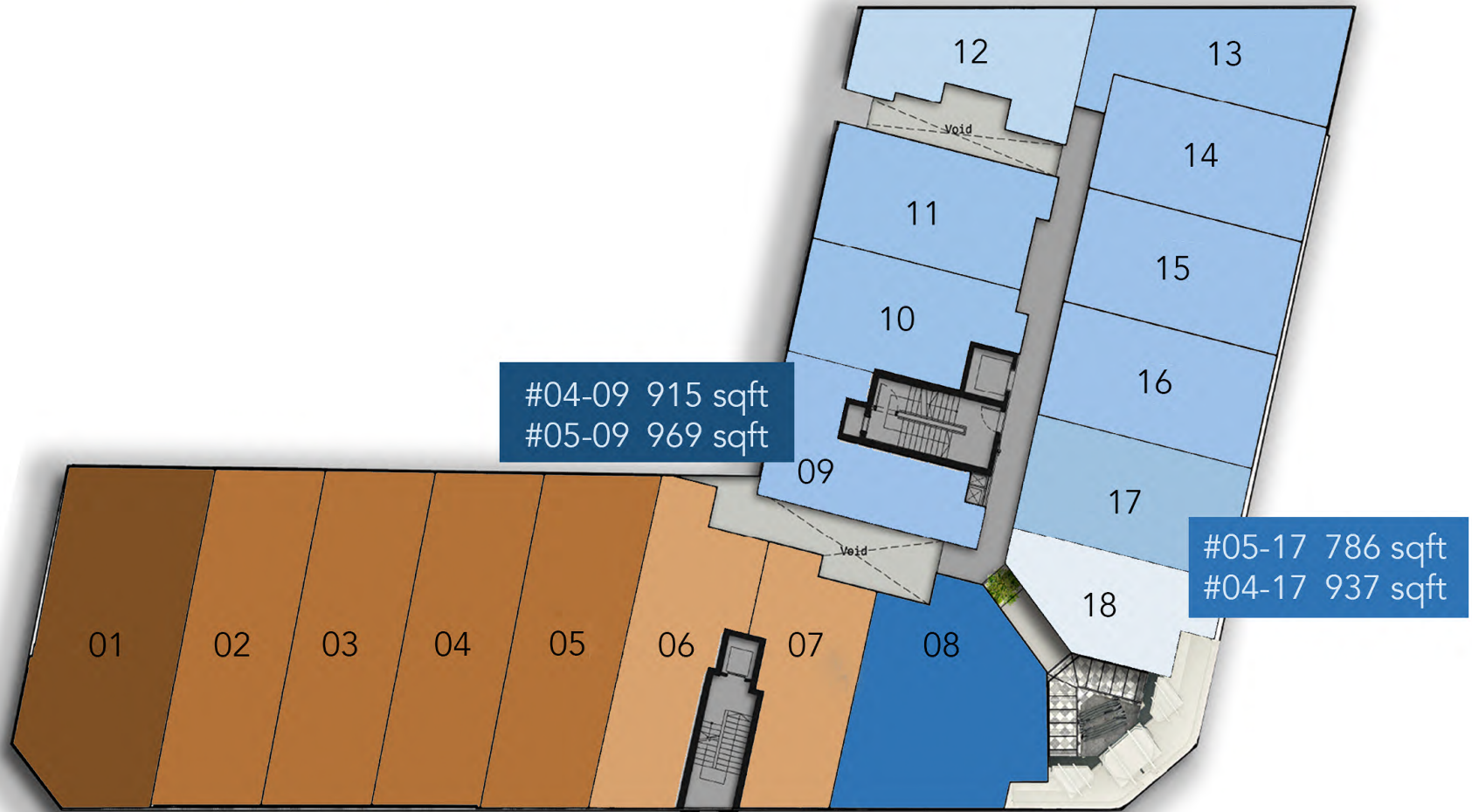
ROOF PLAN

- 30 Water Tank / Booster Pump



FACILITIES PLAN

Residential Storey Plan



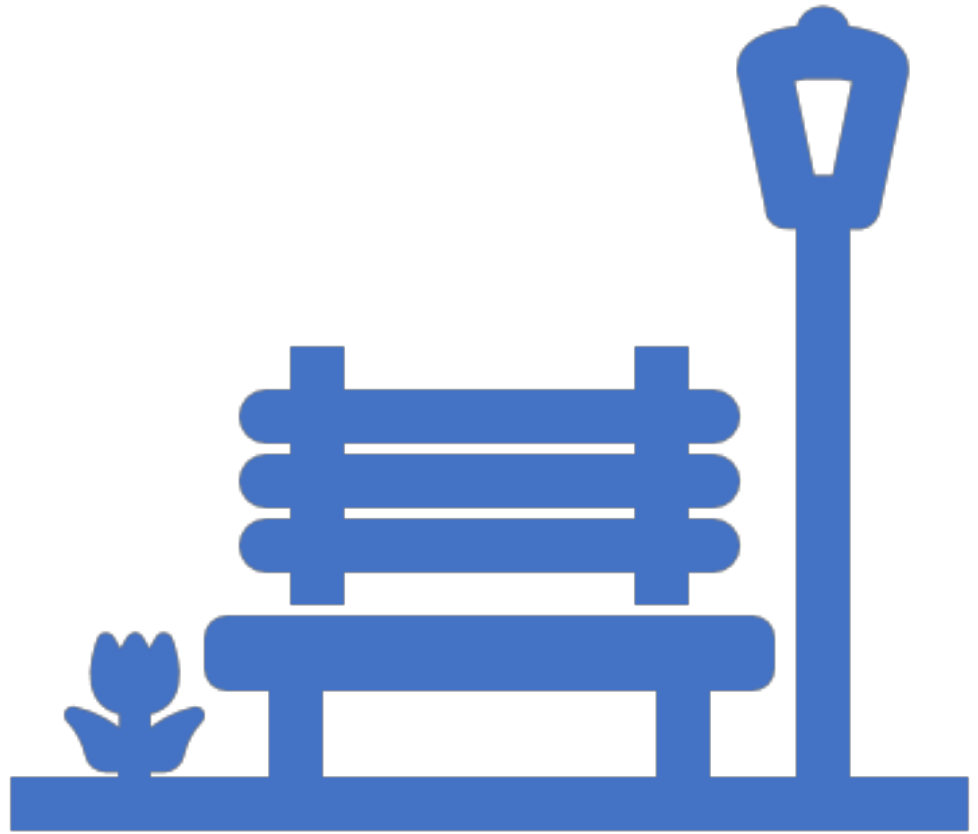
Unit Type	Size Range (sqft)	Number of Units
Heritage Collection		
Retail	700 to 786	7
2 + Study	614 to 786	4
3 Bedroom	1130 to 1152	4
4 Bedroom	1399	1
Modern Collection		
Retail	366 to 560	7
Studio	441	2
1 Bedroom	549	4
1 + Study	506 to 614	28
3 Bedroom	786 to 937	4
3 + Study	915 to 969	2
PentHouse Collection		
2 + Family	1130	1
3 Bedroom	1120	1
3 + Family	1227 to 1238	5
5 Bedroom	1507	1
5 + Study	1658	1

Huttons[®]
The Agency of Choice

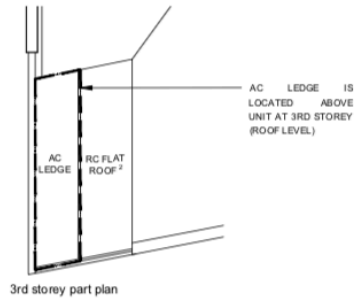
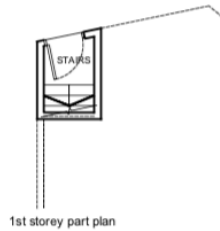
STRICTLY FOR HUTTONS INTERNAL USE ONLY. NOT FOR CIRCULATION

Disclaimer: All illustration, artist impression and information provided here are subjected to change without prior notice

HERITAGE DESIGNS



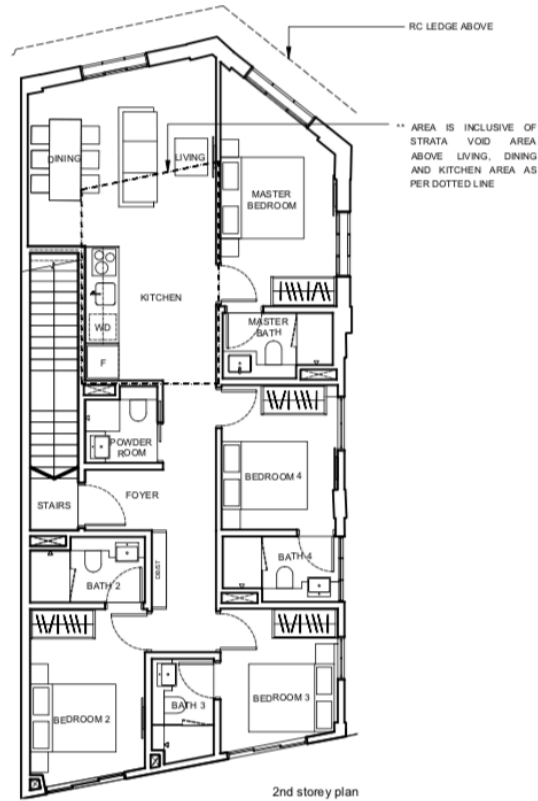
HERITAGE: 4 BEDROOMS



TYPE HD1

130 sqm/ 1399 sqft**

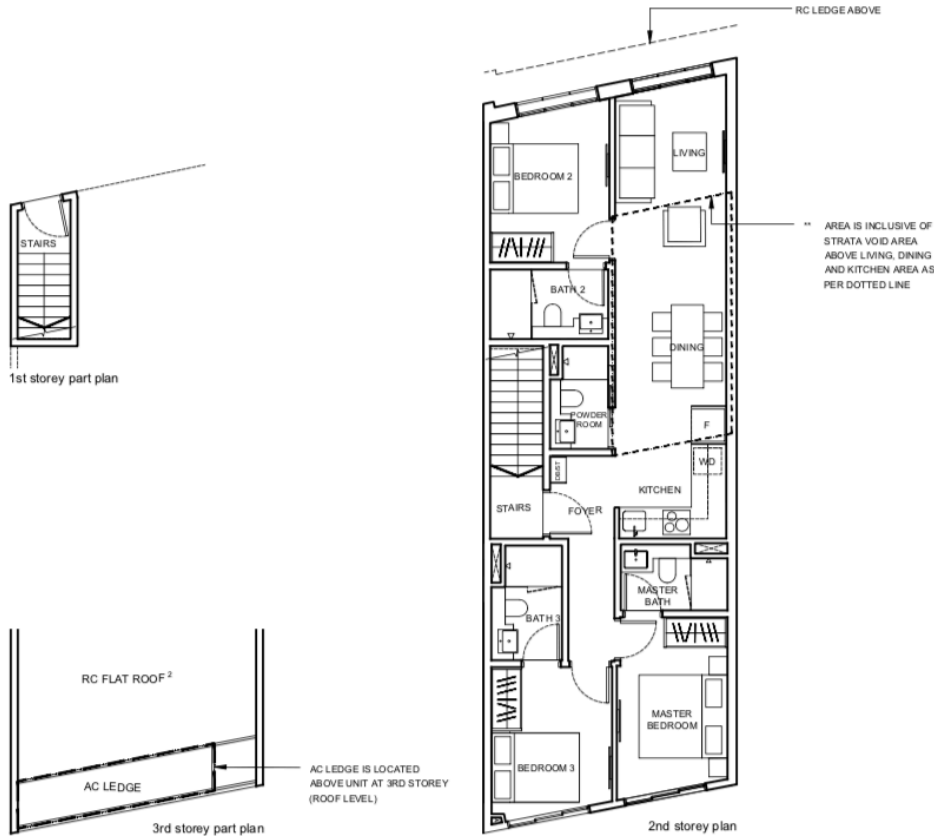
#02-01



4- BEDROOMS

1. PES/Balcony/Open Balcony shall not be enclosed. Only URA approved balcony screens are to be used. For an illustration of the approved balcony screen please refer to Appendix A in this brochure.
2. RC ledge/ RC slab / RC Flat roof is non strata area. Areas include AC ledge, A/C ledge, Balcony, Open Balcony, PES, Roof Terrace and strata void (where applicable). Orientation and facings will differ depending on the unit you are purchasing. Please refer to the key plan. Plans are not drawn to scale and subject to change as may be required or approved by the relevant authorities. All areas are estimates and are subject to final survey.
1. RC flat roof is non-strata area. No access to RC flat roof except for maintenance and fire escape purposes only.
- #. High Ceiling – Refer to SPA Ceiling Height Schedule
- * Denotes mirror unit

HERITAGE: 3 BEDROOMS



TYPE HC1

105 sqm / 1130 sqft**

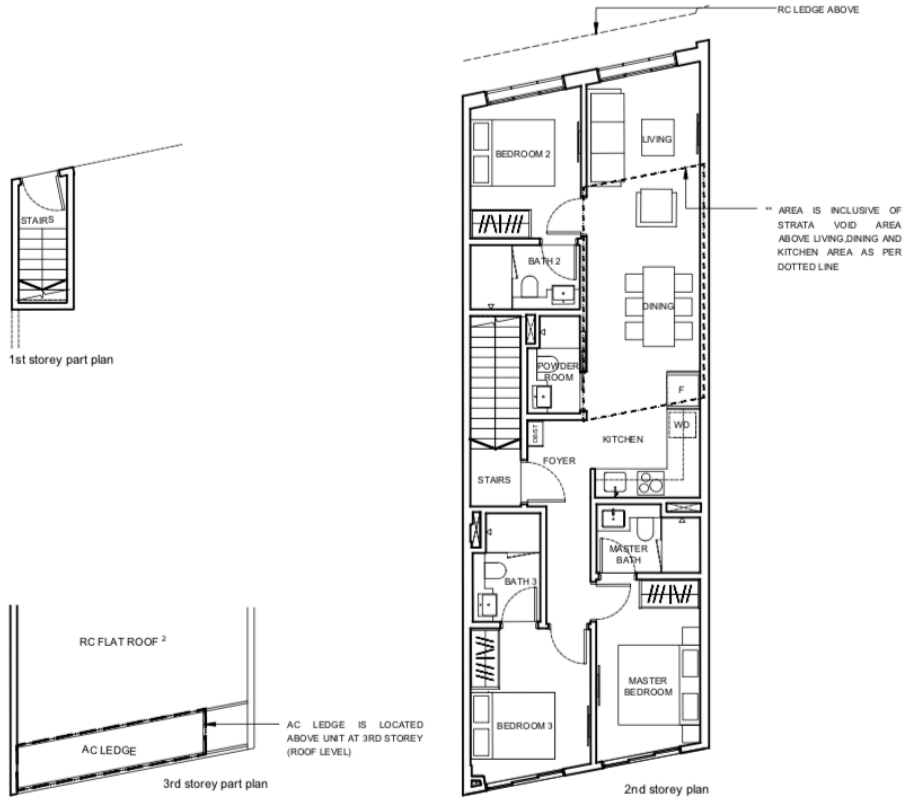
#02-04

1. PES/Balcony/Open Balcony shall not be enclosed.
Only URA approved balcony screens are to be used. For an illustration of the approved balcony screen please refer to Appendix A in this brochure.
2. RC ledge/ RC slab / RC Flat roof is non strata area.
Areas include AC ledge, A/C ledge, Balcony, Open Balcony, PES, Roof Terrace and strata void (where applicable). Orientation and facings will differ depending on the unit you are purchasing.
Please refer to the key plan. Plans are not drawn to scale and subject to change as may be required or approved by the relevant authorities. All areas are estimates and are subject to final survey.
1. RC flat roof is non-strata area.
No access to RC flat roof except for maintenance and fire escape purposes only.
- #. High Ceiling – Refer to SPA Ceiling Height Schedule
- * Denotes mirror unit



3- BEDROOMS

HERITAGE: 3 BEDROOMS



TYPE HC2

106 sqm/ 1141 sqft**

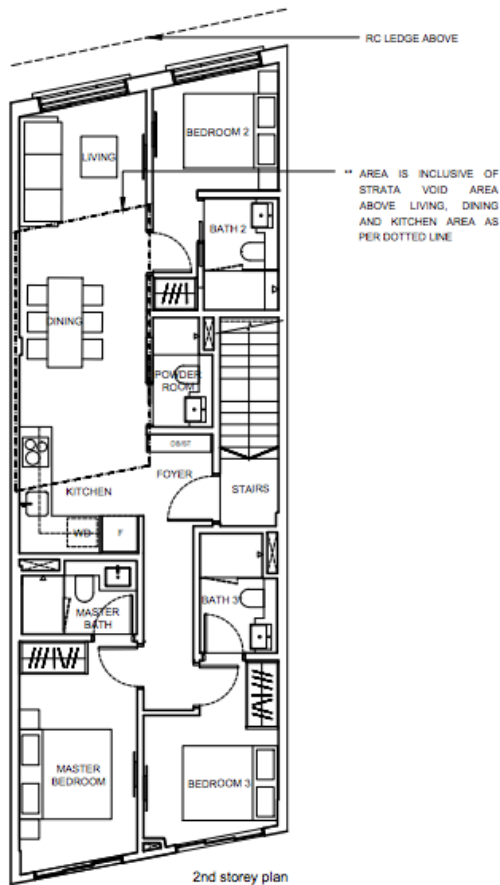
#02-02



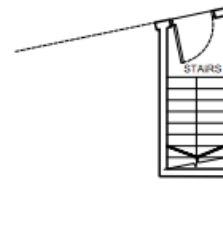
1. PES/Balcony/Open Balcony shall not be enclosed. Only URA approved balcony screens are to be used. For an illustration of the approved balcony screen please refer to Appendix A in this brochure.
2. RC ledge/ RC slab / RC Flat roof is non strata area. Areas include AC ledge, A/C ledge, Balcony, Open Balcony, PES, Roof Terrace and strata void (where applicable). Orientation and facings will differ depending on the unit you are purchasing. Please refer to the key plan. Plans are not drawn to scale and subject to change as may be required or approved by the relevant authorities. All areas are estimates and are subject to final survey.
1. RC flat roof is non-strata area. No access to RC flat roof except for maintenance and fire escape purposes only.
- #. High Ceiling – Refer to SPA Ceiling Height Schedule
- * Denotes mirror unit

3- BEDROOMS

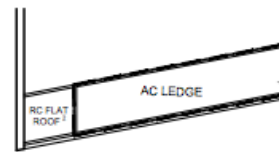
HERITAGE: 3 BEDROOMS



2nd storey plan



1st storey part plan



3rd storey part plan

AC LEDGE IS LOCATED ABOVE UNIT AT 3RD STOREY (ROOF LEVEL)

TYPE HC3

107 sqm/1152 sqft**

#02-03

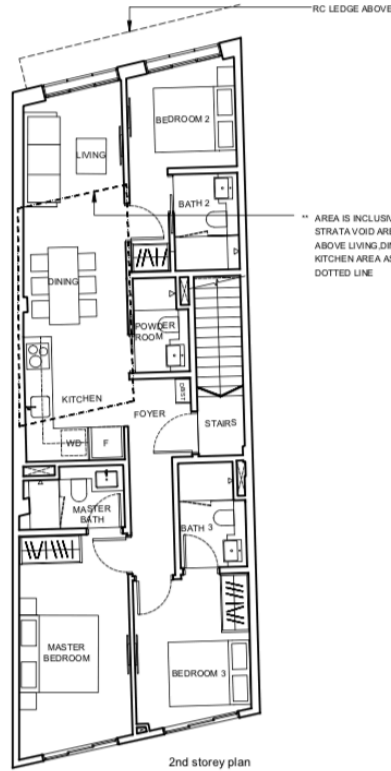
1. PES/Balcony/ Open Balcony/Roof Terrace shall not be enclosed.
Only LRA approved balcony screen/roof terrace cover design are to be used. For an illustration of the approved balcony screen/ roof terrace cover design please refer to Appendix A in this brochure.
2. RC ledge/ RC slab / RC Flat roof is non strata area. No access to RC flat roof except for maintenance and fire escape purposes only.
Areas include AC ledge, AC ledge, Balcony, Open Balcony, PES, Roof Terrace and strata void (where applicable).
Orientation and facings will differ depending on the unit you are purchasing. Please refer to the key plan.
Plans are not drawn to scale and subject to change as may be required or approved by the relevant authorities. All areas are estimates and are subject to final survey.



KEY PLAN NOT TO SCALE

3- BEDROOMS

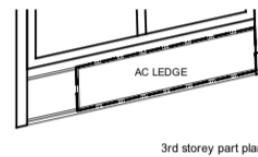
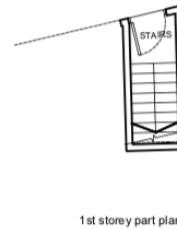
HERITAGE: 3 BEDROOMS



TYPE HC4

106 sqm/ 1141 sqft**

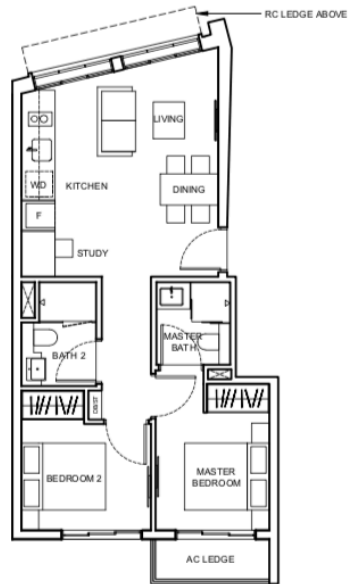
#02-05



3 - BEDROOMS

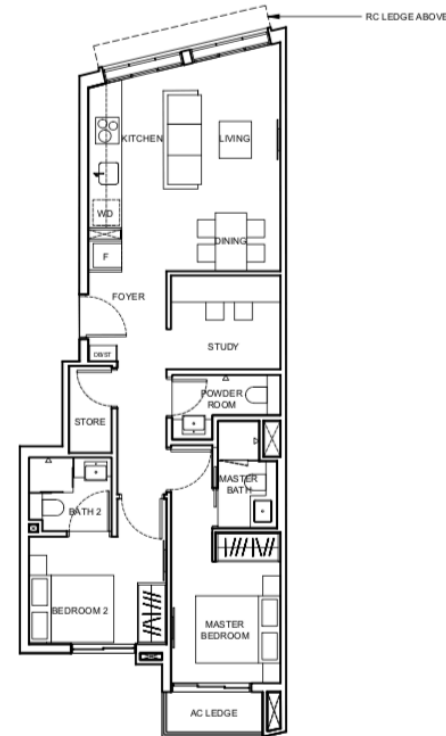
1. PES/Balcony/Open Balcony shall not be enclosed.
Only URA approved balcony screens are to be used. For an illustration of the approved balcony screen please refer to Appendix A in this brochure.
2. RC ledge/ RC slab / RC Flat roof is non strata area.
1. Areas include AC ledge, A/C ledge, Balcony, Open Balcony, PES, Roof Terrace and strata void (where applicable). Orientation and facings will differ depending on the unit you are purchasing. Please refer to the key plan. Plans are not drawn to scale and subject to change as may be required or approved by the relevant authorities. All areas are estimates and are subject to final survey.
1. RC flat roof is non-strata area.
- No access to RC flat roof except for maintenance and fire escape purposes only.
- #. High Ceiling – Refer to SPA Ceiling Height Schedule
- * Denotes mirror unit

HERITAGE: 2 BEDROOMS + STUDY



TYPE HBS1

57 sqm/ 614 sqft
#02-07 TO #03-07



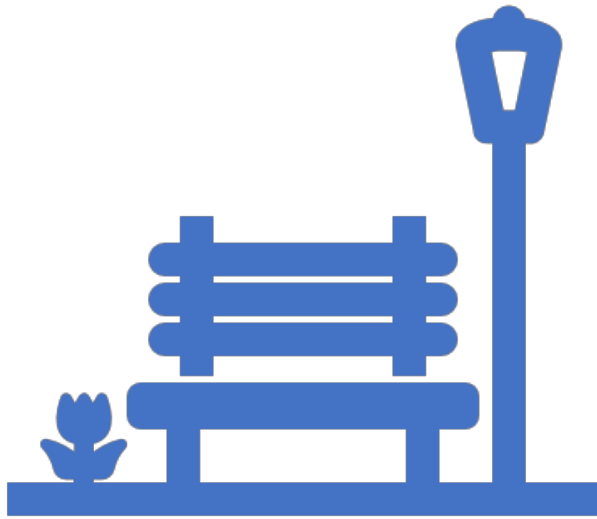
TYPE HBS2

73 sqm/ 786 sqft
#02-06 TO #03-06



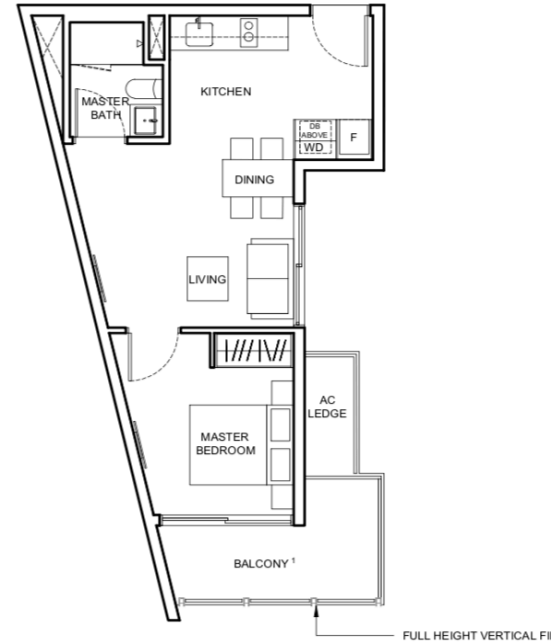
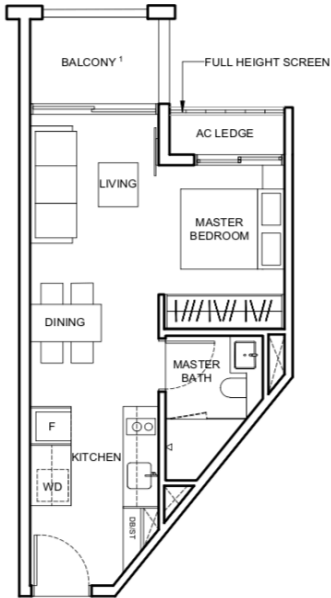
2 - BEDROOMS + STUDY

1. PES/Balcony/Open Balcony shall not be enclosed.
Only URA approved balcony screens are to be used. For an illustration of the approved balcony screen please refer to Appendix A in this brochure.
 2. RC ledge/ RC slab / RC Flat roof is non strata area.
Areas include AC ledge, A/C ledge, Balcony, Open Balcony, PES, Roof Terrace and strata void (where applicable). Orientation and facings will differ depending on the unit you are purchasing.
Please refer to the key plan. Plans are not drawn to scale and subject to change as may be required or approved by the relevant authorities. All areas are estimates and are subject to final survey.
 1. RC flat roof is non-strata area.
No access to RC flat roof except for maintenance and fire escape purposes only.
- #. High Ceiling – Refer to SPA Ceiling Height Schedule
* Denotes mirror unit



MODERN DESIGNS

MODERN: STUDIO & 1 BEDROOM



TYPE MA1

41 sqm/441 sqft
#02-18 TO #03-18

STUDIO

- 1 PES/Balcony/Open Balcony/Roof Terrace shall not be enclosed.
Only LURA approved balcony screen/ roof terrace cover design are to be used. For an illustration of the approved balcony screen/roof terrace cover design please refer to Appendix A in this brochure.
- 2 RC ledge/ RC slab / RC Flat roof is non strata area.
Areas include AC ledge, Balcony, Open Balcony, PES, Roof Terrace and strata void (where applicable).
Orientation and facings will differ depending on the unit you are purchasing. Please refer to the key plan.
Plans are not drawn to scale and subject to change as may be required or approved by the relevant authorities. All areas are estimates and are subject to final survey.



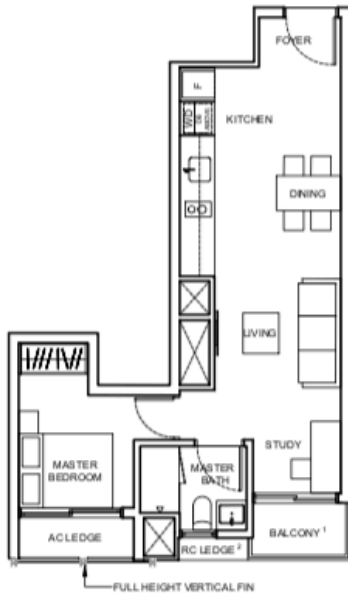
TYPE MA2

51 sqm/549 sqft
#02-12 TO #05-12

1-BEDROOM



MODERN: 1+STUDY



TYPE MAS1

47 sqm/506 sqft
#02-09 TO #03-09



TYPE MAS2

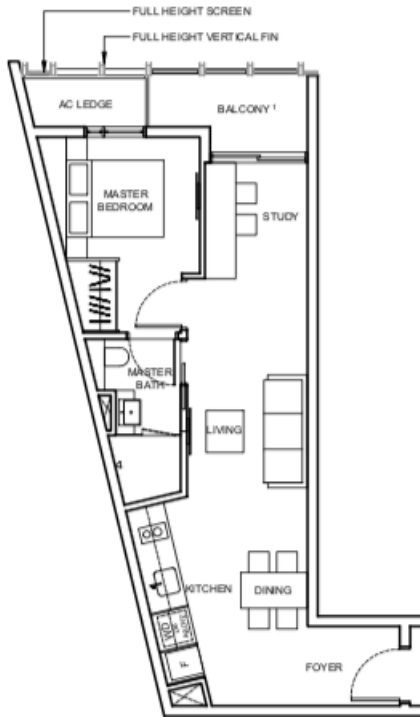
53 sqm/ 570 sqft
#02-10 TO #05-10



- 1 PES/Balcony/Open Balcony/Roof Terrace shall not be enclosed.
Only LWA approved balcony screen/roof terrace cover designs are to be used. For an illustration of the approved balcony screen/roof terrace cover design please refer to Appendix A in this brochure.
- 2 RC ledge/RC slab / RC Flat roof is non-lease area.
Areas include AC ledge/Balcony, Open Balcony, PES, Roof Terrace and stair void (where applicable).
Orientation and fittings will differ depending on the unit you are purchasing. Please refer to the key plan.
Plans are not drawn to scale and subject to change as may be required or approved by the relevant authorities. All areas are estimates and are subject to final survey.

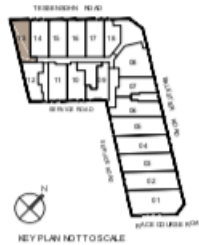
I- BEDROOM + STUDY

MODERN: 1 + STUDY

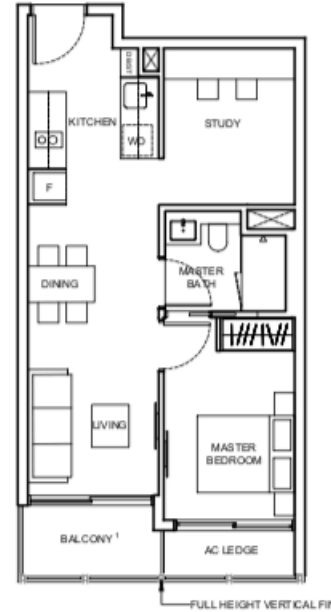


TYPE MAS3

57 sqm/ 614 sqft
#02-13 TO #05-13



KEY PLAN NOT TO SCALE



TYPE MAS4

57 sqm/ 614 sqft
#02-11 TO #05-11



KEY PLAN NOT TO SCALE

1. PES/Balcony/Open Balcony/Roof Terrace shall not be enclosed.
Only LWA approved balcony screen/ roof terrace cover designs are to be used. For an illustration of the approved balcony screen/ roof terrace cover design please refer to Appendix A in this brochure.
2. RC ledge/ RC slab / RC Flat roof is non strata area.
Areas include AC ledge/ Balcony, Open Balcony, PES, Roof Terrace and strata void (where applicable).
Orientation and facings will differ depending on the unit you are purchasing. Please refer to the key plan.
Plans are not drawn to scale and subject to change as may be required or approved by the relevant authorities. All areas are estimates and are subject to final survey.

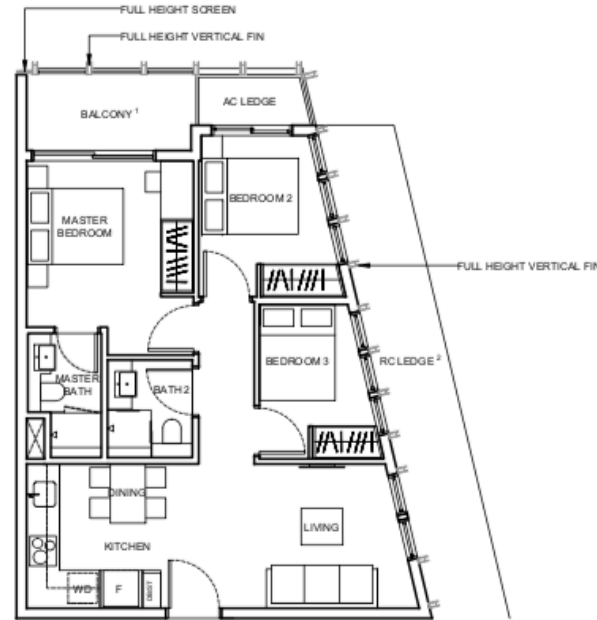
I- BEDROOM + STUDY

MODERN: 3 BEDROOMS



TYPE MC1-P

87 sqm/ 936 sqft
#04-17



TYPE MC1

73 sqm/ 786 sqft
#05-17

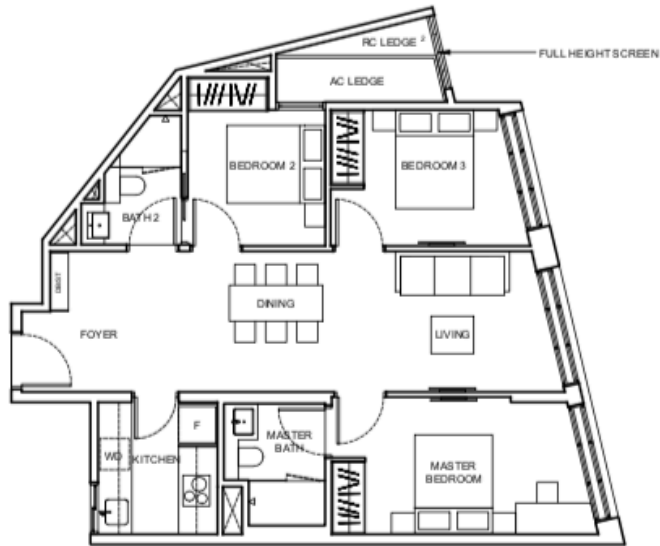


1 PES/Balcony/Open Balcony/Roof Terrace shall not be enclosed.
Only URA approved dry screen/ roof terrace cover designs are to be used. For an illustration of the approved balcony screen/roof terrace cover design please refer to Appendix A in this brochure.

2 RC ledge/ RC slab / RC flat roof is non-strata area.
Areas include AC ledge/ Balcony, Open Balcony, PES, Roof Terrace and strata void (where applicable).
Orientation and fittings will differ depending on the unit you are purchasing. Please refer to the key plan.
Plans are not drawn to scale and subject to change as may be required or approved by the relevant authorities. All areas are estimates and are subject to final survey.

3- BEDROOMS

MODERN: 3 BEDROOMS



TYPE MC2

83 sqm / 893 sqft

#02-08 TO #03-08

- 1 PES/Balcony/Open Balcony/Roof Terrace shall not be enclosed.
Only URA approved balcony screens/ roof terrace cover design are to be used. For an illustration of the approved balcony screens/ roof terrace cover design please refer to Appendix A in R1's brochure.
- 2 RC ledge/ RC slab / RC Flat roof is non-strata area.
Areas include AC ledge, Balcony, Open Balcony, PES, Roof Terrace and strata void (where applicable).
Orientation and fixings will differ depending on the unit you are purchasing. Please refer to the key plan.
Plans are not drawn to scale and subject to change as may be required or approved by the relevant authorities. All areas are estimates and are subject to final survey.



3- BEDROOMS

MODERN: 3 BEDROOMS + STUDY



TYPE MCS1-P

85 sqm / 915 sqft
#04-09



TYPE MCS2

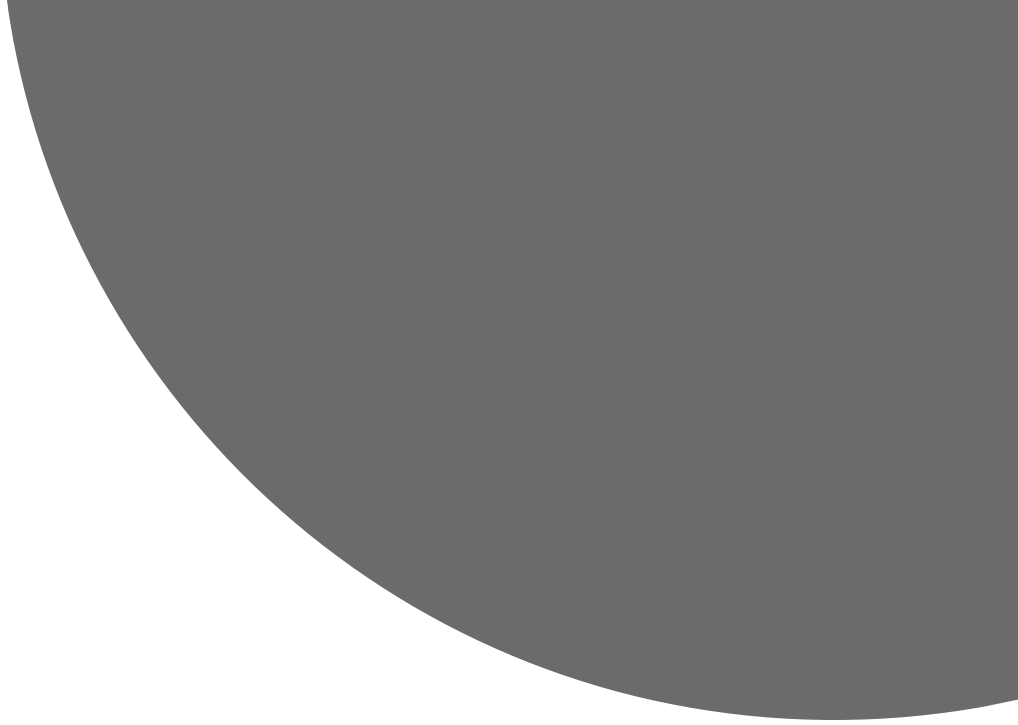
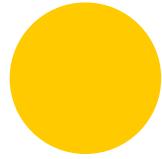
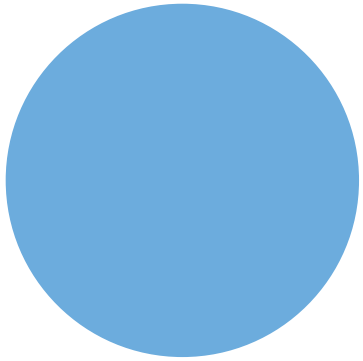
90 sqm / 969 sqft
#05-09



1 PES/Balcony/Open Balcony/Roof Terrace shall not be enclosed.
Only URA approved balcony screen/roof terrace cover design are to be used. For an illustration of the approved balcony screen/roof terrace cover design please refer to Appendix A in this brochure.

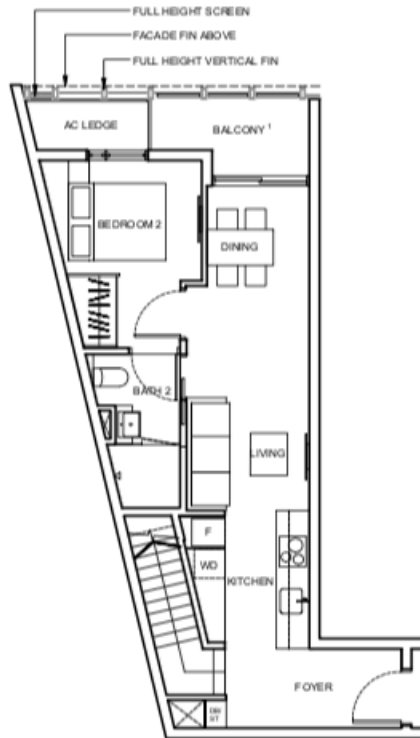
2 RC ledge/RC slab / RC flat roof to non-slable areas.
Areas include AC Ledge, Balcony, Open Balcony, PES, Roof Terrace and slable void (where applicable).
Orientation and setbacks will differ depending on the unit you are purchasing. Please refer to the key plan.
Plans are not drawn to scale and subject to change as may be required or approved by the relevant authorities. All areas are estimates and are subject to final survey.

3 - BEDROOMS + STUDY

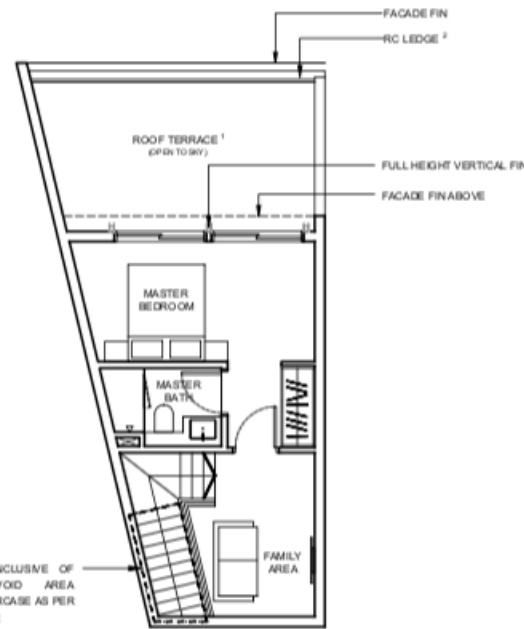


PENTHOUSE
DESIGN |

PENTHOUSE: 2 BEDROOMS + FAMILY



Lower Level



** AREA IS INCLUSIVE OF STRATA VOID AREA ABOVE STAIRCASE AS PER DOTTED LINE

Upper Level

TYPE MBF1-PH

105 sqm / 1130 sqft**

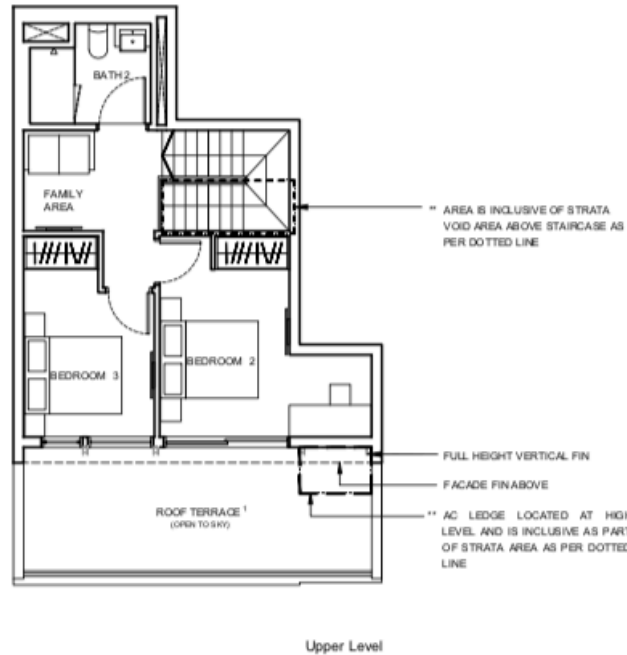
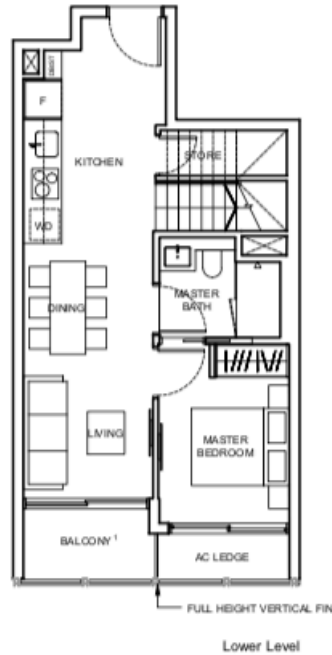
#06-13

1. PES/Balcony/Open/Balcony/Roof Terrace shall not be enclosed.
Only UFA approved balcony screens/roof terrace cover design are to be used. For an illustration of the approved balcony screens/roof terrace cover design please refer to Appendix A in the brochures.
2. RC ledge/RC slab /RC Flat at roof is non-strata area.
Areas include AC ledge, Balcony, Open/Balcony, PES, Roof Terrace and strata void (where applicable).
Orientation and ratings will differ depending on the unit you are purchasing. Please refer to the key plan.
Plans are not drawn to scale and subject to change as may be required or approved by the relevant authorities. All areas are estimates and are subject to final survey.



2-BEDROOMS + FAMILY AREA

PENTHOUSE: 3 BEDROOMS + FAMILY



TYPE MCF1-PH

114 sqm/ 1227 sqft**

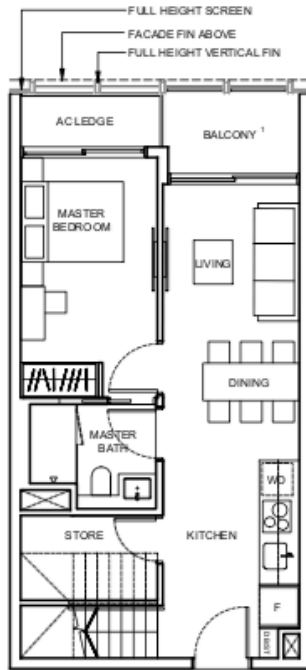
#06-10

1. PES/Balcony/Open Balcony/Roof Terrace shall not be enclosed.
Only URA approved balcony screen/roof terrace cover design are to be used. For an illustration of the approved balcony screen/roof terrace cover design please refer to Appendix A in this brochure.
2. RC ledge/RC slab / RC Flat roof is non-strata area.
Areas include AC ledge, Balcony, Open Balcony, PES, Roof Terrace and strata void (where applicable).
Orientation and fittings will differ depending on the unit you are purchasing. Please refer to the key plan.
Plans are not drawn to scale and subject to change as may be required or approved by the relevant authorities. All areas are estimates and are subject to final survey.

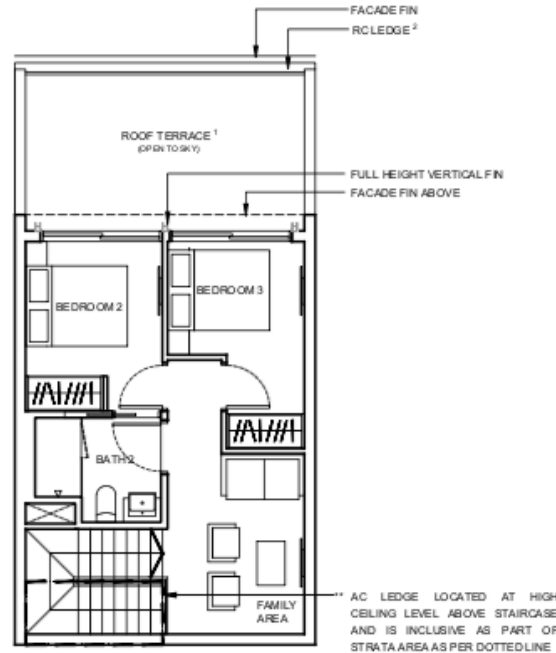


3-BEDROOMS + FAMILY AREA

PENTHOUSE: 3 BEDROOMS + FAMILY



Lower Level



Upper Level

TYPE MCF3-PH

114 sqm/ 1227 sqft**

#06-14*

#06-15

#06-16

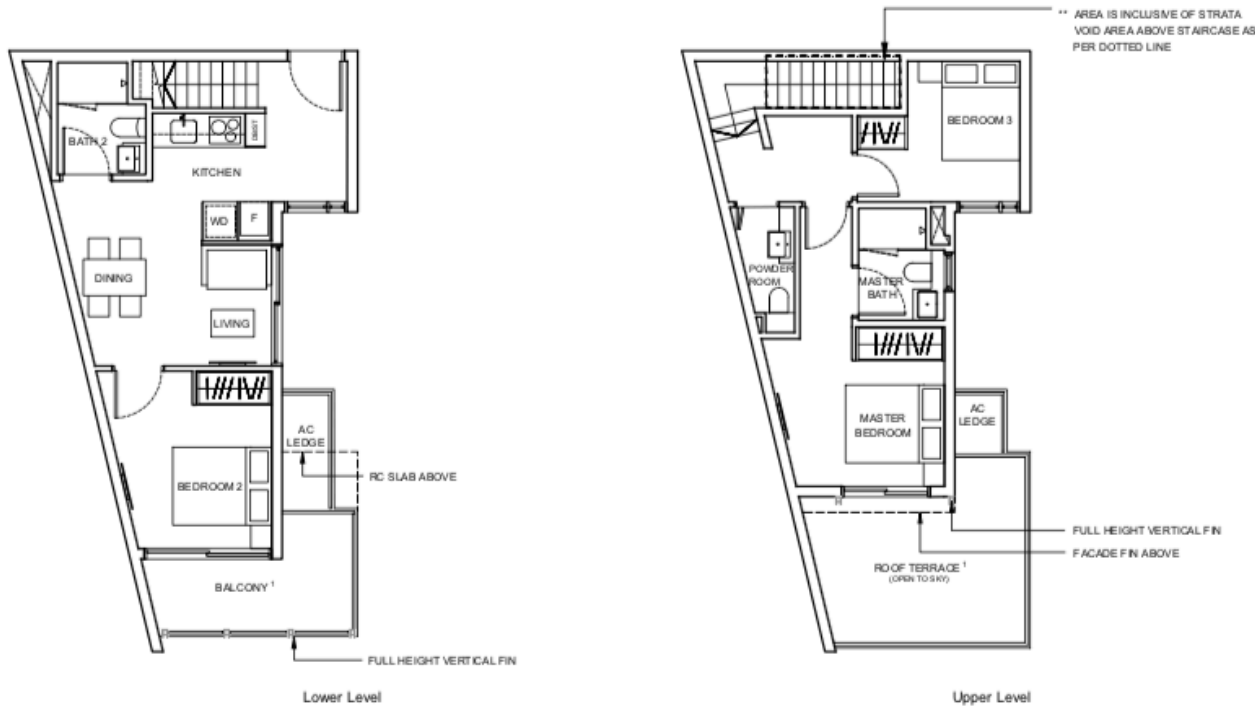
*Denotes mirror unit

1. PES Balcony/Open Balcony/Roof Terrace shall not be enclosed.
Only URM approved balcony/rooftop/terrace cover design can be used. For an illustration of the approved balcony/rooftop/terrace cover design please refer to Appendix A in this brochure.
2. RC ledge/RC slab /RC flat roof is non-strata area.
Areas include AC ledge, Balcony, Open Balcony, PES, Roof Terrace and stairs void (where applicable).
Orientation and facade will differ depending on the unit you are purchasing. Please refer to the key plan.
Plans are not drawn to scale and subject to change as may be required or approved by the relevant authorities. All areas are estimates and are subject to final survey.



3-BEDROOMS + FAMILY AREA

PENTHOUSE: 3 BEDROOMS



TYPE MC2-PH

104 sqm/ 1119 sqft**

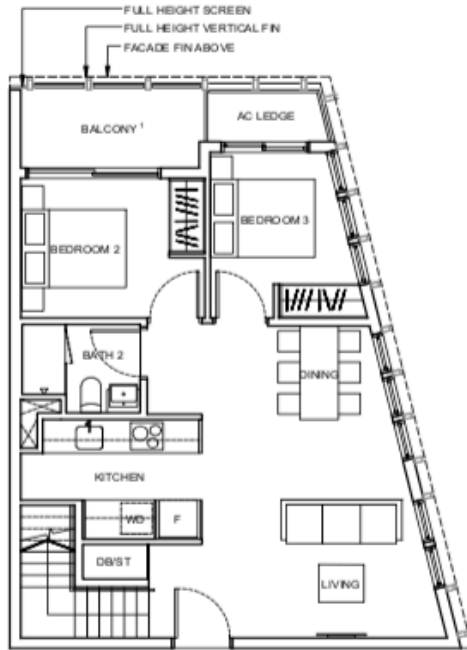
#06-12



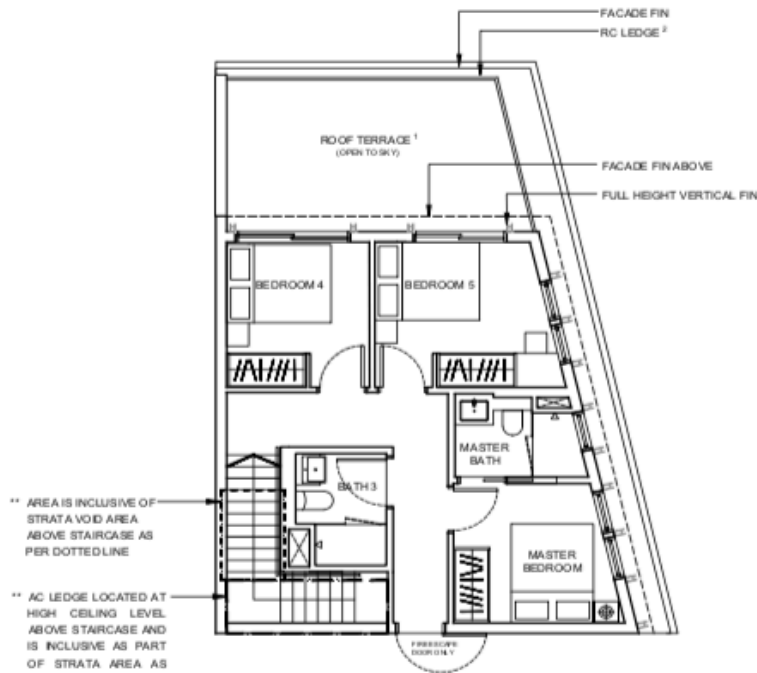
1. PES Balcony/Open Balcony/Roof Terrace shall not be enclosed. Only UPR approved balcony screens/roof terrace cover design are to be used. For an illustration of the approved balcony screens/roof terrace cover design please refer to Appendix A in the brochure.
2. RC ledge/ RC slab / RC Flat roof is non strata area. Areas include AC ledge, Balcony, Open Balcony, PES, Roof Terrace and strata void (where applicable). Orientation and fixtures will differ depending on the unit you are purchasing. Please refer to the key plan. Plans are not drawn to scale and subject to change as may be required or approved by the relevant authorities. All areas are estimates and are subject to final survey.

3- BEDROOMS

PENTHOUSE: 5 BEDROOMS



Lower Level



Upper Level

TYPE ME1-PH

140 sqm/ 1507 sqft**

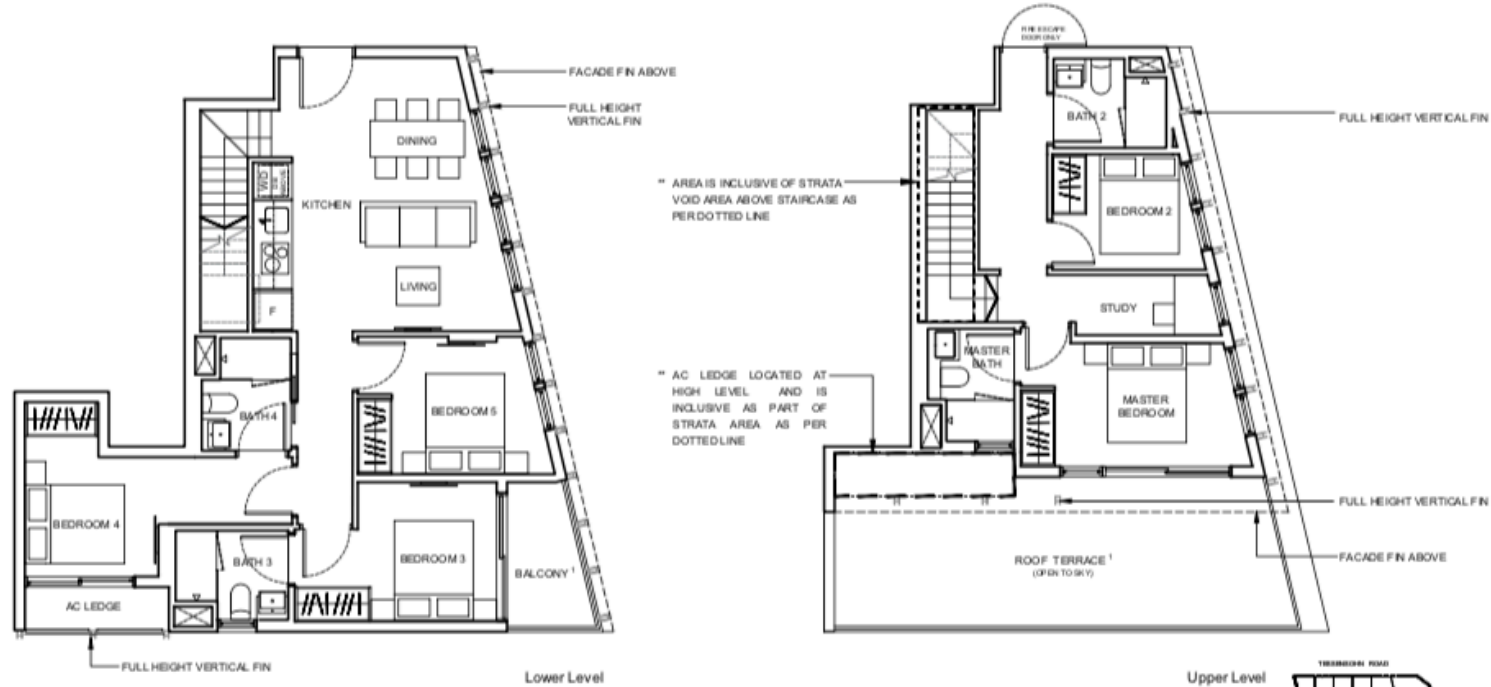
#06-17



1. PES/Balcony/Open Balcony/Roof Terrace shall not be enclosed.
Only UFA approved balcony screen/roof terrace cover design set to be used. For an illustration of the approved balcony screen/roof terrace cover design, please refer to Appendix A in this brochure.
2. RC ledge/ RC slab / RC Flat roof is non strata area.
Areas include AC ledge, Balcony, Open Balcony, PES, Roof Terrace and strata void (where applicable).
Orientation and fittings will differ depending on the unit you are purchasing. Please refer to the key plan.
Plans are not drawn to scale and subject to change as may be required or approved by the relevant authorities. All areas are estimates and are subject to final survey.

5- BEDROOMS

PENTHOUSE: 5 BEDROOMS + STUDY



TYPE MES2-PH

154 sqm/ 1658 sqft**

#06-09

1. PES/Balcony/Open
Only UPR approval
2. RC ledge/RC slab
Areas include AC ledge, Balcony, Open Balcony, PES, Roof Terrace and stairs void (where applicable).
Orientation and fittings will differ depending on the unit you are purchasing. Please refer to the key plan.
Plans are not drawn to scale and subject to change as may be required or approved by the relevant authorities. All areas are estimates and are subject to final survey.



5- BEDROOMS + STUDY